

Inova-bg Ltd.

Radina H

Table of contents:

- 1. Main features..... 3
- 2. Com Port Initialization..... 4
- 3. Common configuration 5
- 4. Radio channel configuration 6

1. Main features

Radina H is a communication device with the main purpose to receive audio signal on 3 channels from radio stations. It regenerates, filtering and retransmit signals to the base station using radio channel, built-in two-wire modem or trough IP network using external converter.

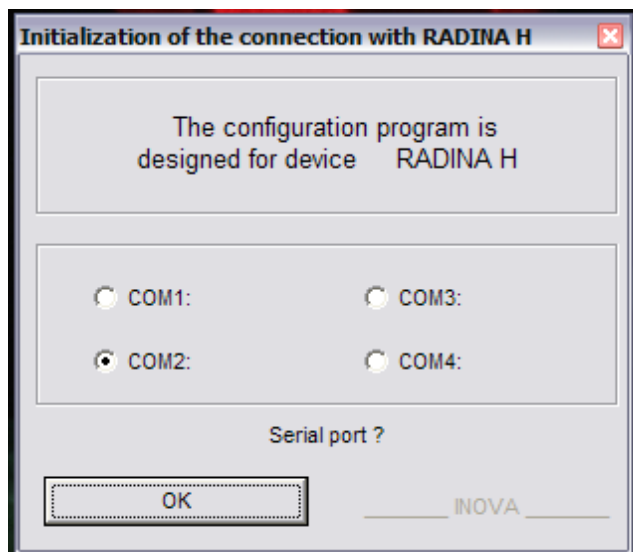
Inputs and Outputs :



- 12V – Power Supply 12 V
- R1, R2, R3 – Connectors for the radio stations
 - ❖ 1 – PTT
 - ❖ 2 - Audio Input
 - ❖ 3 – GND
 - ❖ 4 – Audio Output
- Line – Built-in modem
- RS232C – Serial connector for converter – RS232C/LINE, microwave link, IP converter (IP1UART)

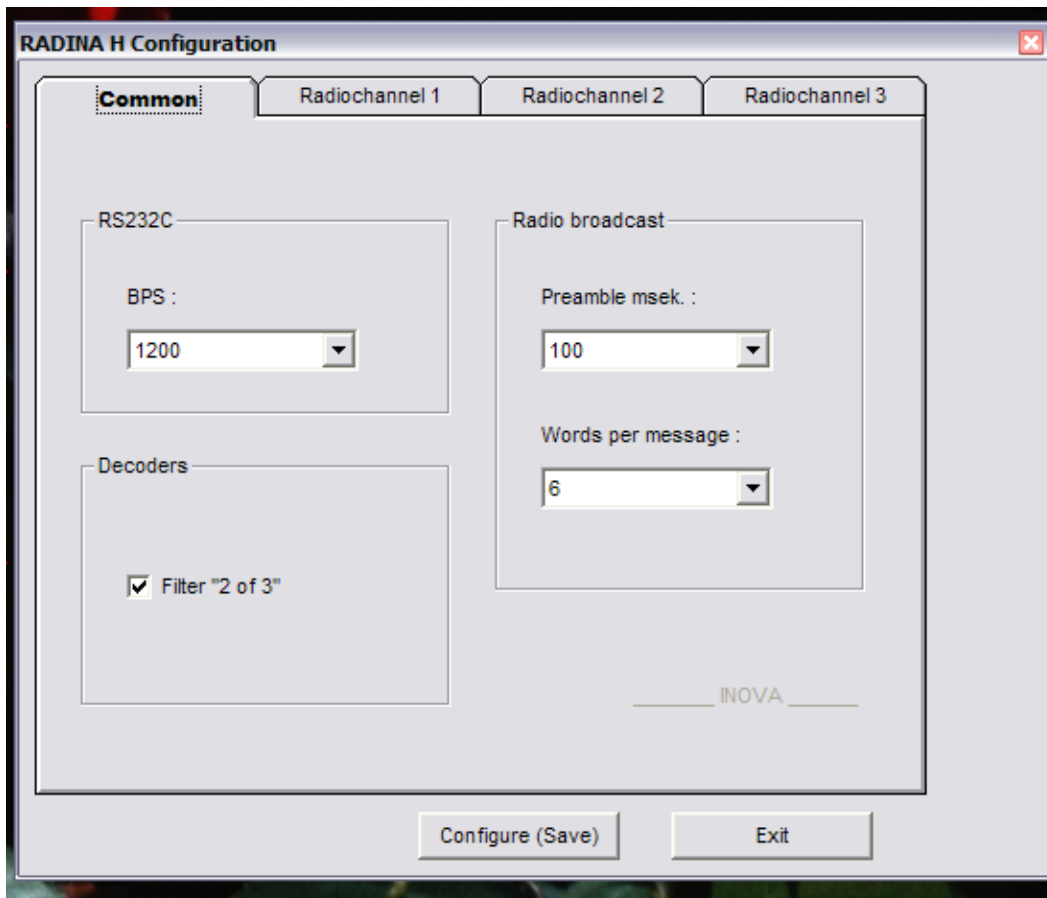
2. Com Port Initialization

Device parameters can be configured with the program - Radina H, running under Windows XP/ Vista/ Windows 7. For this connection RS232C is used. After the program is started a Com Port selection window shows up.



Choose the Com Port which is connected. After confirming with the OK button configuration window shows up.

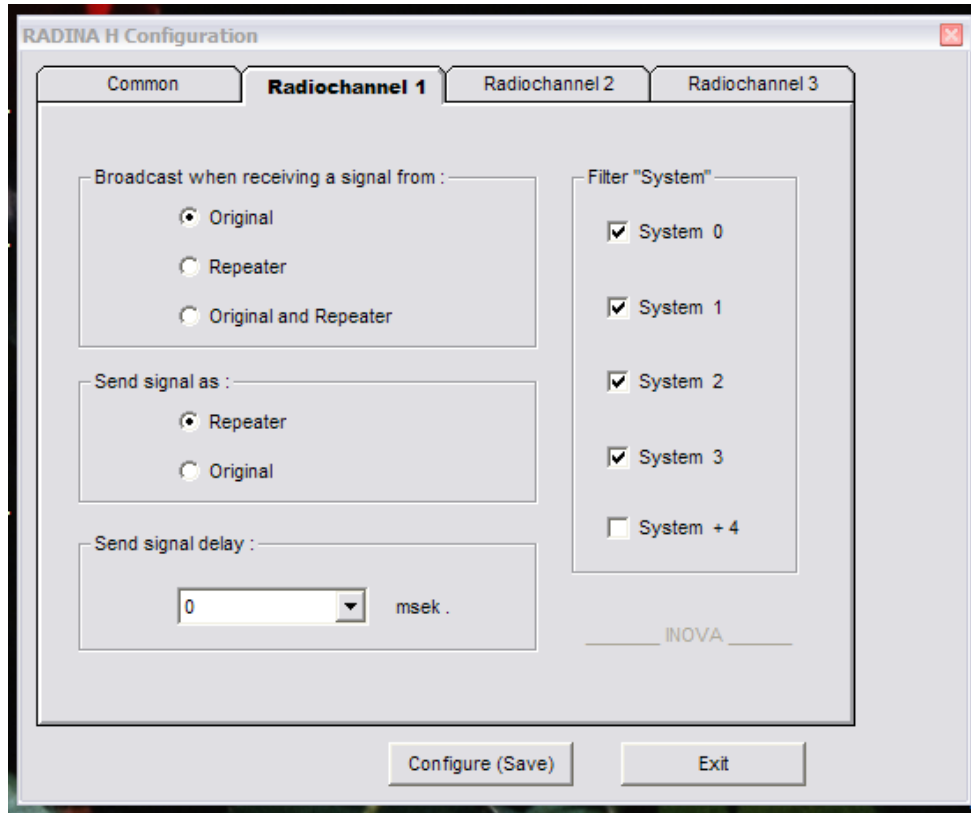
3. Common configuration



- BPS – RS232C Baudrate (default - 4800)
- Enable/Disable “2 of 3” filter (default – Enable)
- Preamble duration – used when retransmit on radio channel (default 100 msec)
- Number of repeats of the word in one message – used when retransmit on radio channel (default – 6)

4. Radio channel configuration

Radio channel 1, 2, 3 menus:



- Filter for received messages (default - original)
- Sent signal type (default – Repeater). Used when retransmit on radio channel
- Sent signal delay (default 1000 msec). Used when retransmit on radio channel
- System filtering – mark the systems that is received. For backup use System +4 if this option is used in the monitoring program.

Press Configure(Save) to save the parameters.